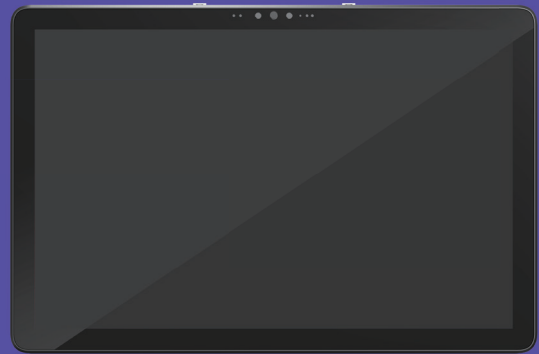


B10 CONFERENCE TOUCH CONTROLLER



Wi-Fi/Network
cable support



Multi-function



PoE Power Supply



Easy control



Flexible
installation

NEARITY B10 conference touch controller provides easy access to Nearity video conferencing solutions. Boasting a 10.1" touchscreen, kensington lock holes, POE power supply, B10 is used not only to control meetings but also as a check-in board. It's easy to find and claim the right meeting space with B10.

Product features

It's easy to set up and start the meetings quickly and directly.

Power over Ethernet makes only one cable required, keeping your table neat.

10.1" touchscreen ensures that operation is easy and clear.

B10 supports the administrator mode, enter the correct password to unlock more operations.

45° angle allows for comfortable viewing, while providing a sleek presence in the room.

- Wi-Fi/Network cable support
- Multi-function
- PoE Power Supply
- Easy control
- Flexible installation

NEARITY B10 Datasheet

Contents	Technical Specifications	
Touchscreen	Size	10.1" LCD Screen
	Resolution	1920 × 1200 FHD
	Touch Panel	In-cell glass panel
System	CPU	Rockchip RK3568, Quad-core Cortex-A55, up to 2.0GHz
	GPU	Mali-G52 GPU
	Memory	4G DDR
	Storage	32GB EMMC
	OS	Android
Connectivity	WIFI	802.11a/b/g/n/ac 2.4G+5G
	Network Port	RJ45
	USB	USB Type-C
Physical	Kensington Lock	Supported
	VESA	Supported
	Dimension	240 × 158 × 20mm
	Weight	440g
Power Supply	Power Adaptor	DC12V/1.5A
	POE	Supported
	Battery	N/A

*All tech specs are subject to change without notice.