

External Magnetic Locks

Surface & mortice



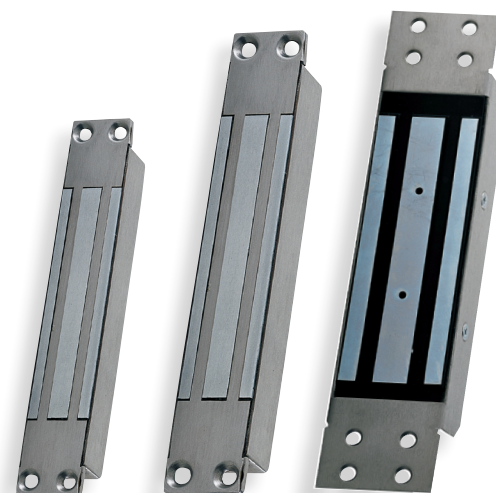
Range: Diax



The external range of electromagnetic locks from CDVI offers high performance locking in the most harsh environments. Manufactured in high quality stainless steel, fully sealed and with monitored as standard on most models, this range offers a flexible locking solution.

The range includes surface and mortice models, with various holding forces, to accommodate your locking requirements. The ES400 & ES500 also include a 20mm internally threaded gland for connection of conduit to ensure cable integrity.

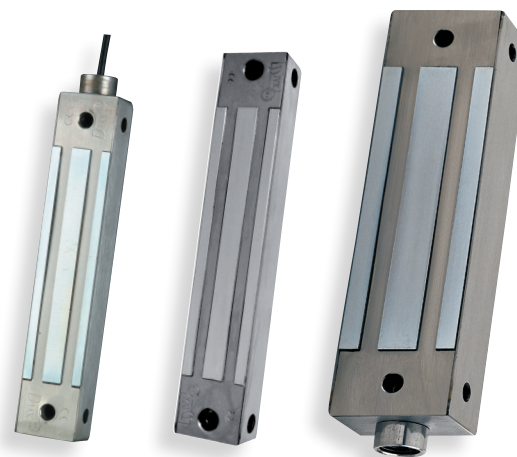
Cased in high-grade stainless steel, with a unique cover plate, all models are supplied with full fixing kits. A range of powder-coated steel brackets are available if required.



EM180

EM300

EM500



ES180

ES400

ES500

- Voltage: 12 or 24V DC.
- Current: 12Vdc = 630mA
24Vdc = 315mA

EM180 / ES180

- Dimensions (LxWxD):
 - EM180 (flush) = 206 x 32 x 25mm,
 - ES180 (surface) = 168 x 33 x 24mm.
- Holding force: 180kg.
- Monitored.

EM300

- Dimensions (LxWxD) = 228 x 39 x 27mm.
- Mortice mount.
- Holding force: 300kg.

ES400

- Dimensions (LxWxD) = 230 x 43 x 30mm.
- Surface mount.
- Holding force: 400kg.
- Monitored.

EM500

- Dimensions (LxWxD) = 288 x 64 x 38mm.
- Mortice mount.
- Holding force: 500kg.

ES500

- Dimensions (LxWxD) = 230 x 61 x 40 mm.
- Surface mount.
- Holding force: 500kg.
- Monitored.

- Extremely reliable
- Fail safe
- Vandal & weather resistant
- 180kg to 800kg holding
- Flush or surface models
- High grade stainless steel
- Face & side fix (surface)
- Monitored
- 5 year warranty